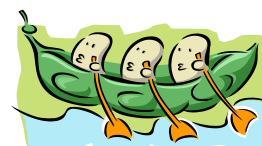


P.E.A. Patch



Volume 32, #7

March 2014

Zombie evaluation bill rises from the dead

Even though the state Senate already killed the teacher evaluation bill by an overwhelming vote, Sen. Andy Hill ® introduced yet another punitive evaluation bill on Monday. Hill's bill SB 5880, would require the use of state tests in teacher evaluations next year, and would remain in effect regardless of whether Washington's No Child Left Behind waiver is extended. A similar bill HB 2800, was introduced in the state House.

Teachers oppose mandating the use of state test scores in teacher evaluations for the following reasons:

- There is no research indicating that mandating the use of state test scores improves student learning or strengthens teaching.
- A single test given in the spring does not measure student growth.
- Mandating the use of state test scores reduces local school district flexibility to meet unique student needs.
- Washington is adopting new state assessments aligned with Common Core Standards, which will take years to implement successfully.
- Only a fraction of teachers teach one of the subjects or grades currently covered by state tests.
- The inappropriate overemphasis on high-stakes testing harms students by narrowing the curriculum, reducing classroom learning time, and reducing the overall reliability of the testing system itself.
- Tests must be proven to be valid and reliable in measuring what students have learned before they are used in teacher evaluation.

Legislators need to hear your opinion on these bills, SB 5880 and HB 2800. The legislative session ends on March 13.

Contact your legislators by going to www.ourvoicewashingtonnea.org from your home computer or smart phone during non-work hours, or by calling 1.800.562.600.

CONTACT YOUR LEGISLATORS TODAY!!!

Peninsula Education Association – Affiliated with the WEA and NEA

5209 Pt. Fosdick Dr. N.W. Gig Harbor, WA 98335 Ph# 851-8710

email president@pea.comcastbiz.net website Peninsulaea.com

President	Jim Falcocchio	851-8710
Vice President	Carol Rivera (Goodman Middle School)	530-1600
Secretary	Jennifer Prince (Gig Harbor High School)	530-1400
Treasurer	Karin Ashabraner (Goodman Middle School)	530-1600

Visit Peninsulaea.com for more information

<p>Daylight Savings Time</p> <p>Sunday, March 9</p> <p>“spring forward”</p>	<p>Calendar</p> <p>March 3 Executive Board</p> <p>March 6 School Board Meeting</p> <p>March 10 Rep Council</p> <p>March 11 PEA members lobby in Olympia</p> <p>March 13 Legislative Session ends</p> <p>March 21 Snow Day...Danielson Work</p> <p>March 24 In-Service...</p>
--	---

PEA to host WEA/PAC Candidate Recommendation Process

WEA/PAC members of the 26th District which includes Gig Harbor and part of South Kitsap School District will meet at Henderson Bay High School to conduct candidate interviews for the upcoming legislative year. PEA members will be joined by South Kitsap EA members and representatives from WEA Olympic to conduct the interviews.

If you are a WEA/PAC member or if you are interested in observing or participating in this important process contact the PEA office 851.8710.

WEA/PAC is our political action committee and supports all pro education candidates from both sides of the aisle.

Your job and your student are affected by elected officials most of which are not educators. Olympia politics play a crucial role in your life, what role will you play in politics?

Let’s continue to raise our collective voice on behalf of our students and our profession.

Know your contract
Section 5.14. Covering Classes

A. Employees may be required to use two (2) planning periods per year to cover classes. Such planning periods shall be used for any uncovered classes.

B. After the two required coverage’s The Employer will attempt to equalize the assignment of substitute duties.

C. The rate of pay for all class coverage is \$30 per hour, for the first four coverage’s each school year, and \$40 per hour thereafter. Arrangement for class coverage shall be made only with prior knowledge and consent of the building principal or designee.

Lack of substitutes is an issue in our district and is becoming a state wide issue as well.